

# TECHNICAL INFORMATION

## High absorption BK filter range

The BK range of high throughput sheets are characterised by their relatively low density, high voids volume, greater absorption capacity and increased depth.

They are specially formulated for the clarification of “difficult liquids” which would rapidly block other grades of filter sheets. As a result, the BK series finds wide acceptance for filtration of viscous liquids and liquids containing high levels of proteinaceous hazes or semi-solid contaminants.

Use of a BK sheet in this type of application, provides the benefits of reduced filtration costs as well as excellent product clarity.

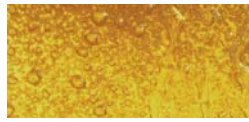
### Typical particle retention values of BK range

GRADE	MIN	RANGE	MAX
BK1000H	8	12	20
BK1500H	5	6	11
BK2000H	4	5	9
BK2500H	3	4	7

### Physical Data

Test Properties	Basic Weight	Thickness	Density	% Ash Content	Permeability	
					litres/min/m <sup>2</sup> @ 100kPa	litres/min/m <sup>2</sup> @ 20kPa
Units	g/m <sup>2</sup>	mm	g/cm <sup>3</sup>	% Weight (g)		
BK1000 H	1150	4.00	0.291	24.5		210
BK1500 H	1550	4.90	0.319	43		57
BK2000 H	1450	4.65	0.314	52		35
BK2500 H	1480	4.25	0.352	52		19

• The above figures are nominal values, for specifications contact your representative



## Instructions for correct use

When inserting into the filter press handle the filter sheets with care to eliminate distortion or abrasion. Never use a damaged filter sheet.

### Insertion of depth filter sheets

To ensure correct use place the smooth side of the filter sheet against the filtration plate (i.e downstream). The rough side of the filter sheet faces the liquid to be filtered (i.e upstream)

### Filter preparation

Prior to the first filtration it is recommended where possible to pre-rinse the closed filter with approximately 50 litres of water per m<sup>2</sup> at 1.25 times the flow rate. During pre-rinsing check for leakage, re-tighten to eliminate if necessary.

#### Sterilisation with steam:

Steam quality:	Steam has to be free of foreign particles and impurities
Temperature:	max 134°C (saturated steam)
Duration	20minutes

#### Sterilisation with hot water:

Water quality:	The water should be softened and be free of impurities
Temperature:	80-85°C
Duration:	20 minutes

### Sheet flushing

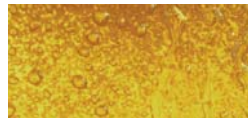
The Carlson range of BK filter sheets can be forward and back washed using softened water to extend the life and reduce the costs of filtration. This is, however, very much dependent upon the application and filtration conditions.

#### Regeneration procedure:

Cold rinsing:	in direction of filtration for approximately 5-10 minutes
Temperature	15-20°C
Hot rinsing;	forward or reverse direction of filtration for approximately 10 minutes
Temperature	60-80°C

### Safety and disposal

Used under the correct conditions the Carlson range of BK filter sheets have no known negative effects and can be disposed of through normal route, observing local and official regulations. Consult MSDS for further information.



## Storage

Store in a place which is dry, cool and free from strong odours.

## Forms of supply

BK range of filter sheets are available in all customary sizes, hygienically shrink-wrapped and packed in cardboard boxes. Special formats are available on request.

## Remarks

All Carlson Filtration Ltd filter sheets are manufactured in accordance with BfR recommendation XXXV1/1 (regulations regarding paper and board designed for contact with foodstuffs) and EC Regulation No 1935/2004 (materials and articles intended to come into contact with food).

All our products are made according to the rules of Quality Management System EN ISO 9001:2008

We provide information and advice to the best of our knowledge. This information cannot be binding in every case on account of the variety of applications, work methods and operating conditions. We, therefore, cannot assume liability for improper use.

Purity through quality™ since 1923



**CARLSON FILTRATION LTD**

BUTTS MILL BARNOLDSWICK LANCASHIRE UNITED KINGDOM BB18 5HP  
TEL: +44 (0) 1282 811000 FAX: +44 (0) 1282 811001 [www.carlson.co.uk](http://www.carlson.co.uk) EMAIL: [sales@carlson.co.uk](mailto:sales@carlson.co.uk)



INVESTOR IN PEOPLE

