

TECHNICAL INFORMATION

The Carlson Carlc carb series

Activated carbon powder has been used in filter sheets for many years, primarily for colour removal from low grade sugar syrups and chlorine removal from water to be used in soft drinks production.

The number of carbon sheet treatment applications has escalated, not only in their variety, but also because of their convenience.

Benefits

- no need for use of loose activated carbon powder or granules
- no need for use of filters and filter aids to facilitate removal of activated carbon from the process fluid
- no messy filter cake
- less time consuming
- easier and cheaper disposal of spent filter materials

Always remember, as with all activated carbon treatment systems, the quality, grade of activated carbon and residence time affects the adsorption capacity.

The sheet life depends on the amount of colour / odour / off-taste / chlorine to be removed and the dwell time of the liquid within the sheet.

Bespoke grades of carbon can be varied to suit the customers' requirements – although minimum order quantities may apply. Only the LWT versions can be used in lenticular cartridge (modules) construction.

All grades are available with protective backing paper, if required.

Carbon treatment applications

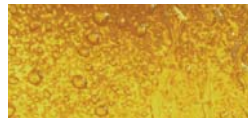
These include **de-colourisation** of blood products, glucose solutions, antibiotics, solvents, sugar syrups, cosmetics, silicone oils, electroplating chemicals, alcoholic beverages; de-odourisation of fruit juices, beverages;

de-chlorination of water; **off-taste removal** in food and beverages.

Physical Data

Test Properties	Basic Weight	Thickness	Density	Permeability	% activated carbon	Weight of carbon
Units	g/m ²	mm	g/cm ³	litres/min/m ² @ 20kPa	%	g/m ²
PROC3AN	1300	4.10	0.320	47	45%	585
PROC3ALN	1080	3.50	0.311	47	45%	450
PROC3ACN	1300	4.10	0.320	47	60%	780

• The above figures are nominal values, for specifications contact your representative



Instructions for correct use

When inserting into the filter press handle the filter sheets with care to eliminate distortion or abrasion. Never use a damaged filter sheet.

Insertion of depth filter sheets

To ensure correct use place the smooth side of the filter sheet against the filtration plate (i.e downstream). The rough side of the filter sheet faces the liquid to be filtered (i.e upstream).

Filter preparation

Prior to the first filtration it is recommended where possible to pre-rinse the closed filter with approximately 50 litres of water per m² at 1.25 times the flow rate. During pre-rinsing check for leakage, re-tighten to eliminate if necessary.

Safety and disposal

Used under the correct conditions the Carlson range of Proc3 filter sheets have no known negative effects and can be disposed of through normal route, observing local and official regulations. Consult MSDS for further information.

Storage

Store in a place which is dry, cool and free from strong odours.

Forms of supply

Proc3 range of filter sheets are available in all customary sizes, hygienically shrink-wrapped and packed in cardboard boxes. Special formats are available on request.

Remarks

All Carlson Filtration Ltd filter sheets are manufactured in accordance with BfR recommendation XXXV1/1 (regulations regarding paper and board designed for contact with foodstuffs) and EC Regulation No 1935/2004 (materials and articles intended to come into contact with food).

All our products are made according to the rules of Quality Management System EN ISO 9001:2008

We provide information and advice to the best of our knowledge. This information cannot be binding in every case on account of the variety of applications, work methods and operating conditions. We, therefore, cannot assume liability for improper use.

Purity through quality™ since 1923



CARLSON FILTRATION LTD

BUTTS MILL BARNOLDSWICK LANCASHIRE UNITED KINGDOM BB18 5HP
TEL: +44 (0) 1282 811000 FAX: +44 (0) 1282 811001 www.carlson.co.uk EMAIL: sales@carlson.co.uk



INVESTOR IN PEOPLE



BRC
FOOD SAFETY
LOGO